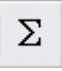
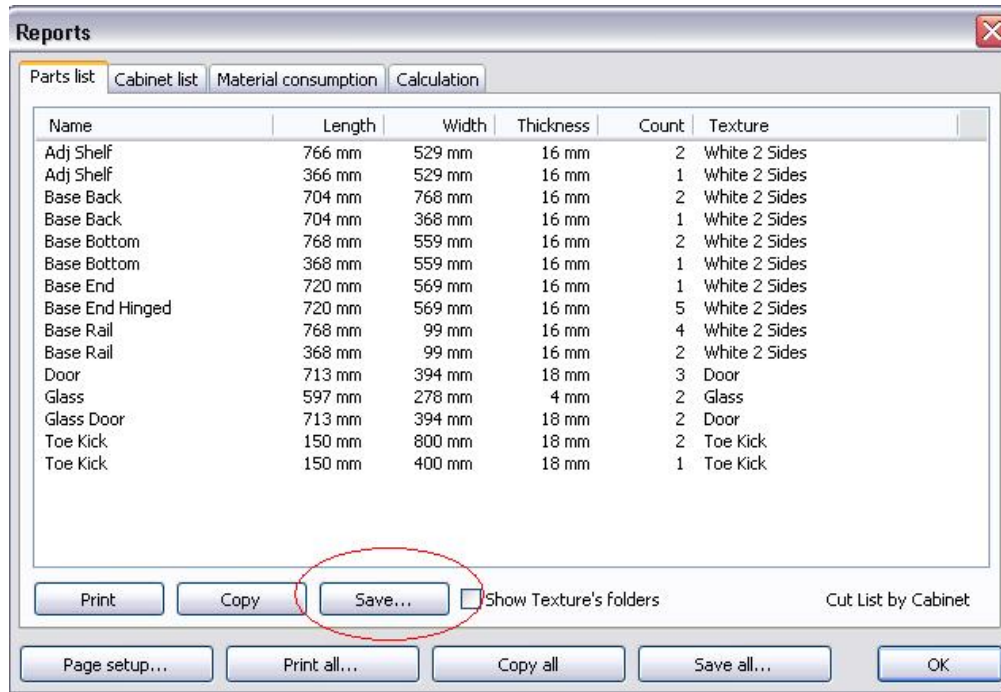
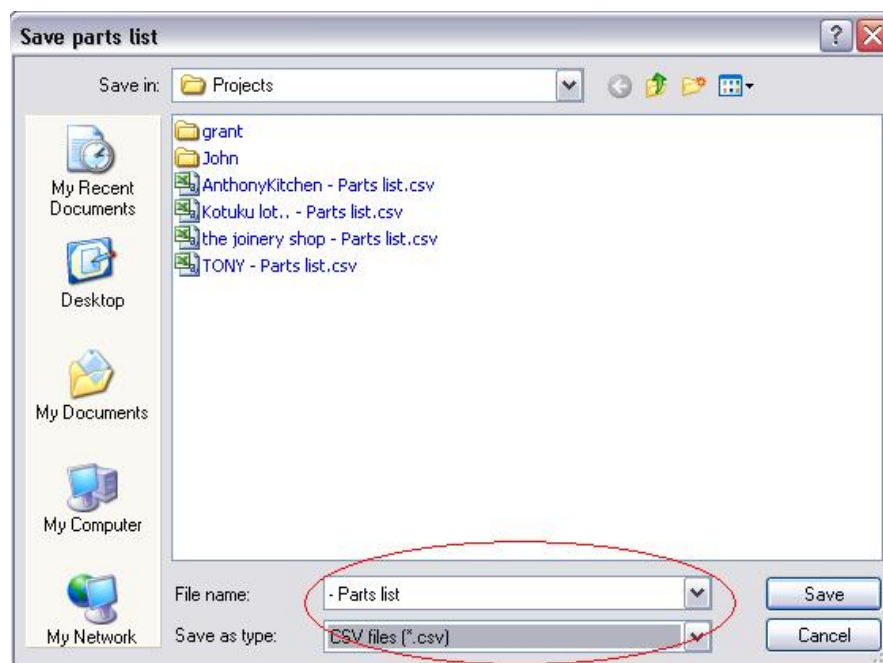


## How to export and import parts into CutList Plus

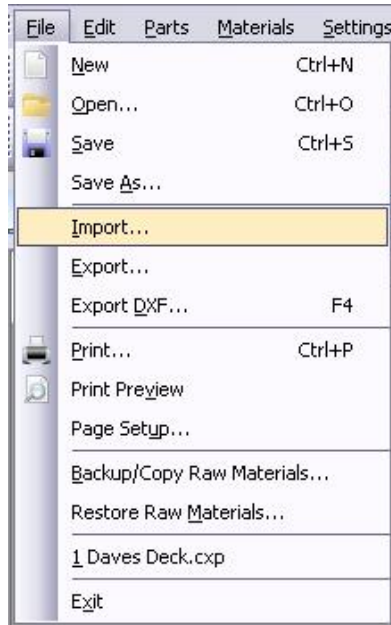
- Once you have created your project you generate the parts report using 
- Click on the Parts Tab of the reports and then click Save



- Next save the file as a csv file with the name you want (It will name it the same as the project if the project has already been saved in PRO100).



- Now open the CutList Plus software and click on File Import



- In to open Window search for the csv file (You should only need to do this the first time you import). The csv file is under Program files, PRO100, Projects unless you save it elsewhere.
- Click on the file you want to import and click open
- In the next screen, select PRO100 from the saved import filters.
- Next click finish and it will import the parts.
- You will need to add the material to the raw material list before you can generate your cutting patterns, Refer to the CutList Plus manual for this.